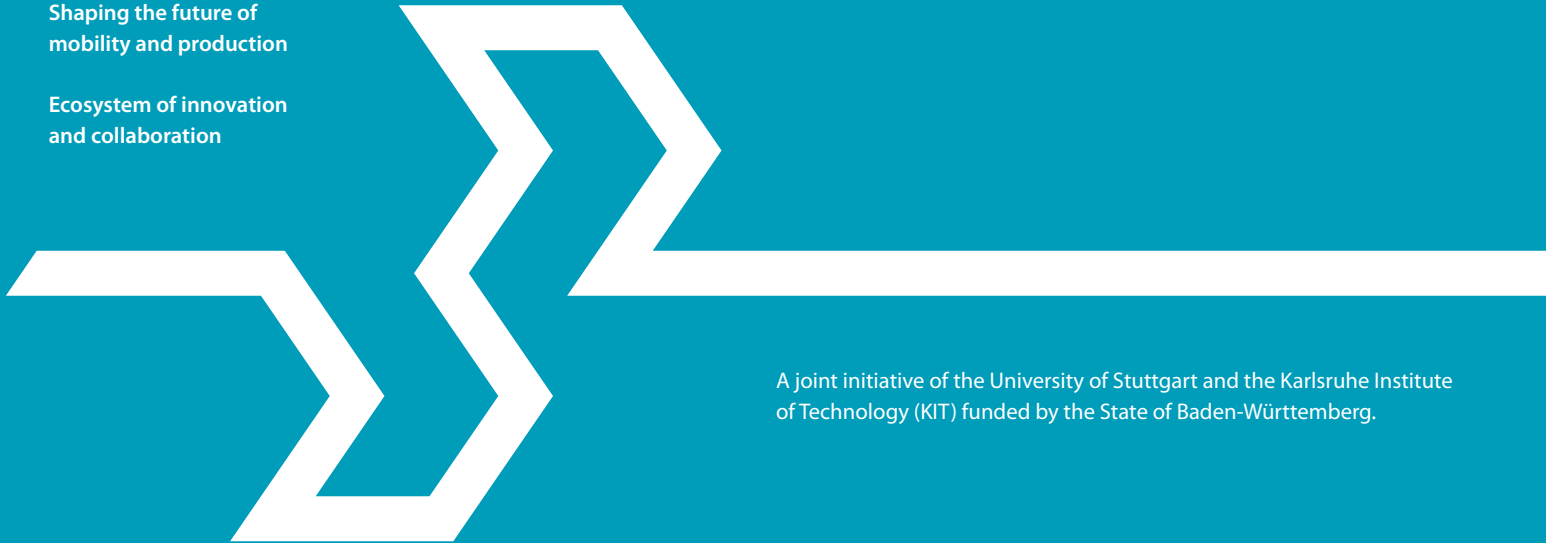


INNOVATIONCAMPUS

FUTURE MOBILITY

Shaping the future of
mobility and production

Ecosystem of innovation
and collaboration



A joint initiative of the University of Stuttgart and the Karlsruhe Institute of Technology (KIT) funded by the State of Baden-Württemberg.

THE INNOVATIONCAMPUS FUTURE MOBILITY (ICM)

Overview

The ICM is a joint research platform of the University of Stuttgart and the Karlsruhe Institute of Technology (KIT).

Within the ICM, we strive for a vision of sustainable, emission-free mobility for the future.

We achieve this through research aimed at pioneering technology in transportation and manufacturing.

ACTIVITIES

Our partners drive innovation through their interdisciplinary projects, contributing to the strength of research and industry and laying a solid foundation for sustainable prosperity.

Strengthening the research landscape through funding formats for science

- University and college-wide collaborative projects
- Development of an interuniversity campus
- Supporting professorships and junior research groups

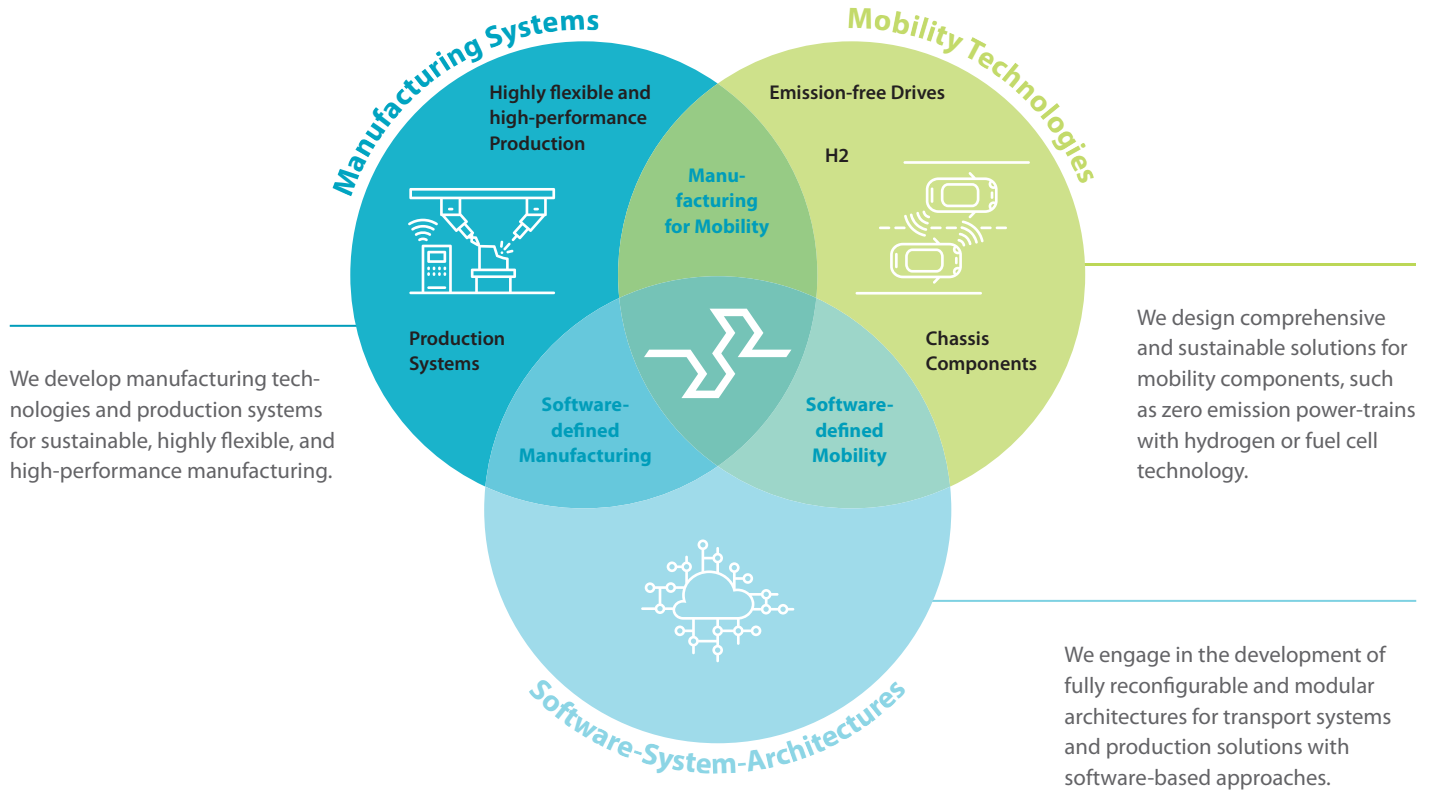
Technology Transfer and Industry Networking

- Initial funding that paves the way for future industrial projects & collaborations
- Linking research ideas from companies with the know-how of universities
- Joint research laboratories for future-oriented topics
- Incubator program to promote innovation

International Cooperation

- Networking with research institutions worldwide
- International exchange program for researchers
- Funding initiatives for international collaborations (German side)

RESEARCH FIELDS



OUR OFFER TO INTERNATIONAL PARTNERS

We invite you to become a part of the thriving German and European research landscape, unlocking important funding opportunities and insights into market trends that elevate your work and impact.

Get access and contribute to our ecosystem of innovation equipped with state-of-the-art technology and advanced research facilities.

So far, 170 mostly interdisciplinary projects have been successfully implemented.



EXHIBITIONS & NETWORKING

- Get in touch with and learn more about the cutting-edge research projects
- Explore opportunities for involvement
- Discover possible collaboration opportunities
- Get to know the German and European research and research-transfer landscape



COLLABORATIVE PROJECTS

- Collaborations with state-of-the-art research facilities
- Further development of your research projects through cross-disciplinary and interdisciplinary research approaches
- Guidance on third-party funding (e.g. Horizon, DAAD, German federal and local funding)
- Use ICM bi-lateral projects as a first step to connect with German and European industry partners



1

2

3

ICM FUTURE MOBILITY GRANTS

- Gain access to cutting-edge facilities and expertise
- Facilitate co-authorships on publications, patent fillings or other tangible research outputs
- Enter a global and distinguished alumni community

Choose between three different funding opportunities:

SHORT-TERM GRANT FOR INTERNATIONAL COLLABORATIONS

- Stay flexible by planning several short visits (up to 14 days each)
- First step towards future collaborative projects and activities
- Profit from knowledge and skill exchange

MID-TERM FELLOWSHIP FOR EXPERTS

- Apply for a two- to six-month stay at KIT or the University of Stuttgart
- Engage in more complex and comprehensive research projects
- Cultural and professional exchange

VISITING PROFESSOR/ EXPERT

- Develop a long-term partnership and strategic collaboration with a 12- to 24-month advisory contract
- Influence research direction and innovation
- Opportunity to mentor junior researchers

CONTACT

InnovationCampus Future Mobility (ICM)
One campus, two locations

University of Stuttgart
Nobelstrasse 15
70569 Stuttgart
Germany

Karlsruhe Institute of Technology (KIT)
Kaiserstrasse 12
76131 Karlsruhe
Germany

info@icm-bw.de | www.icm-bw.de

Your contact for the ICM Future Mobility Grants
mobilitygrants@icm-bw.de

Your contact for Collaborative Projects
transfer@icm-bw.de



INNOVATIONCAMPUS
FUTURE MOBILITY